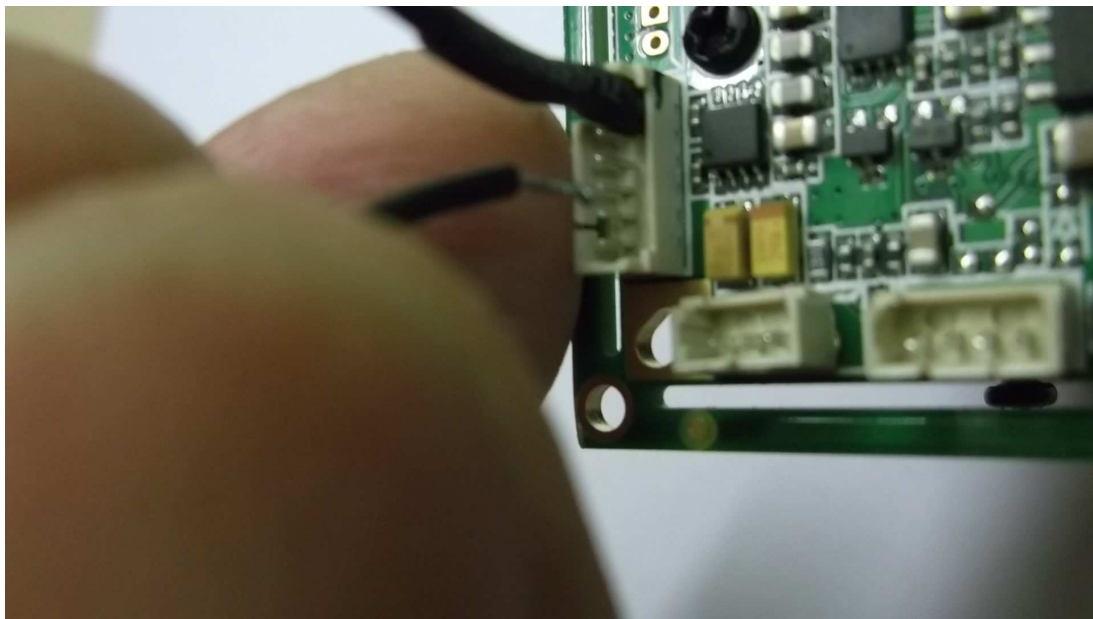


EASY SELFMADE PROGRAMMING CABLE

To activate the OSD Setup Menu fix the cable on pin 6 = GND and touch with the other side of the cable the shown point on the board.



To navigate inside the OSD Setup Menu touch with the cable one of the other 5 pins.



Pin Functions

- 6 = GND
- 5 = Menu Down
- 4 = Menu Up
- 3 = Select
- 2 = Cycle +
- 1 = Cycle -